



Quick Installation Guide

TYPE^{TO} LEARN[®] 4

AGENTS OF INFORMATION

Published by



SUNBURST digital

Version v1.2.1

Installation

System Requirements

Macintosh:

Intel and PowerPC

MacOS X 10.3.9, 10.4.x, 10.5.x, 10.6

Minimum Specs:

- PowerPC G4 or higher, 800 MHz or faster
- 512 MB RAM or more
- OS X 10.3.9 or higher
- Minimum screen resolution 1024x768
- U.S. English keyboard

Recommended:

- Intel Processor, 1 GB RAM or more

Windows:

Windows 2000 Service Pack 4;

Windows XP Service Pack 2;

Windows Vista (32-bit and 64-bit).

Minimum Specs:

- Pentium 3 or higher, 1 GHz processor or faster
- 512 MB RAM or more
- Windows 2000 Service Pack 4 or higher
- DirectX 9.0c
- Minimum screen resolution 1024x768 at 32 bits
- U.S. English keyboard

Recommended:

- Pentium 4 or higher; 1.5 GHz processor or faster; 1 GB RAM or more; Windows XP Service Pack 2 or better

Hard Drive Space

(Macintosh and Windows):

- Client – 1.5 GB
- Server – 400 MB

Server Requirements

(Macintosh and Windows):

- At least the *recommended* specs above, or better
- Windows 2000 server
- Windows 2003 server
- Intel or PowerPC Macintosh or any XServe running at least MacOS X 10.4 or 10.5
- It is also possible to run the server on a Windows XP Pro or Vista machine, on networks which do not have any machines using Windows Server.

Note: Cannot be installed to a Novell server.

Web Browser Requirements:

- Microsoft Internet Explorer 6 and above
- Firefox 2 and above
- Safari 3.1.2 and above (OS X 10.3.9 users must use Firefox or Internet Explorer)
- Pop-ups must be allowed for printing
- High-speed Internet connection

Windows Server Installation

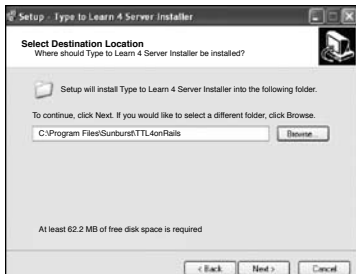
(Network Version only)

Note: You must have **Administrator rights** on the machine in order to run this server installer.

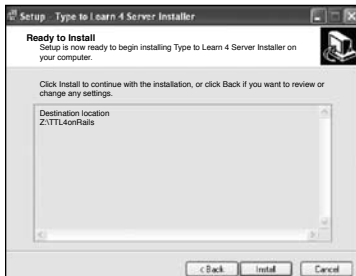
1. Place the *Type to Learn 4* Network CD Disk 1 of 2 into the CD-ROM drive **of your server**.
2. Launch "TTL4WindowsServerInstaller.exe".



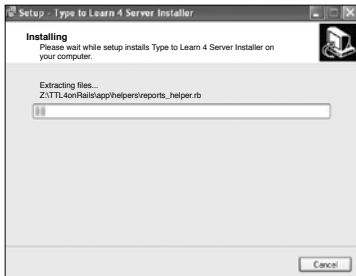
3. Click Next on the Welcome screen.



4. Click Browse to select your Network Server installation location. Then click Next.



5. Review the installation location, and then click Install.



6. The installation process begins. It may take several minutes depending on the computer. Even when the progress bar looks to be completely finished, the installation is still going.



7. Your server must be restarted for installation to be completed. Select “Yes, restart the computer now”, and click Finish.

Windows Client Installation

(All Versions) Every *Type to Learn 4* purchaser must do this Client Installation.

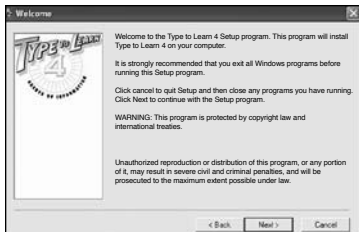
Note: You must have **Administrator rights** on the machine in order to run this installer.

This client installation places the *Type to Learn 4* client application onto your computer. The installation should be performed on every client machine that needs to run *Type to Learn 4*, including Web version computers. Installation may take about 10-20 minutes and may require a restart of your computer.

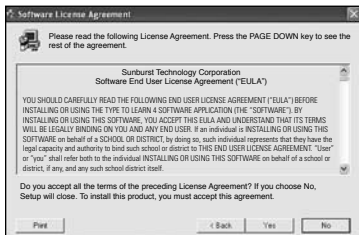
Important: Do not simply copy the *Type to Learn 4* files from one computer to another. This will cause permissions problems and the program may not run. Make sure to use the installer to install the product onto each client machine.

Before installing *Type to Learn 4* we recommend that you close all open applications on your computer.

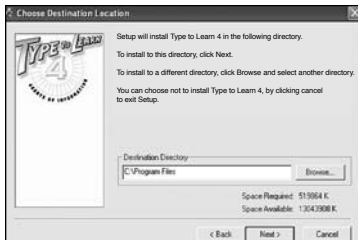
1. Place the *Type to Learn 4* CD Disk 1 of 2 into the CD-ROM drive of your client machine and launch the CD-ROM.
2. Launch the “Type to Learn 4 v1.2 Setup_Win” installer.



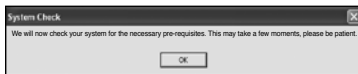
3. On the Welcome screen click Next.



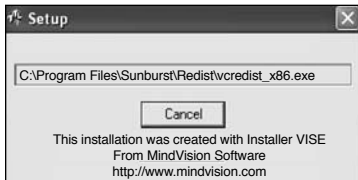
4. Read the End User License Agreement and click Yes if you agree to the terms.



5. Accept the default install location (which we recommend) or Browse to a different location. Click Next.



6. You may see this system message. Click OK to continue.

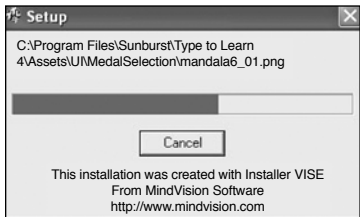


Type to Learn 4 begins to install to your machine. This may take several minutes. While it may not initially look like progress is being made, it is installing important files to your computer.

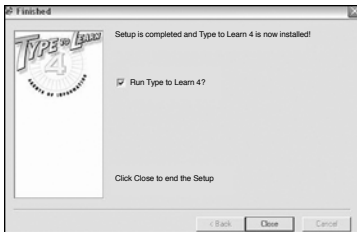


7. When the installer prompts you for Disk 2 of 2, remove Disk 1 from your CD-ROM drive and input *Type to Learn 4* Disk 2 of 2 into the same drive. Click OK once Disk 2 is in the CD-ROM drive.

If your machine happens to have multiple CD-ROM or DVD-ROM drives you may need to Browse to select the proper drive letter for the *Type to Learn 4* installation disk. Then insert Disk 2 and click OK.



The installation automatically continues.



8. Click Close on the Installation Finished screen. You can automatically launch *Type to Learn 4* right away or uncheck that box to launch the program later.

Important! Proxy Servers: If you use a proxy server to connect to the internet, *Type to Learn 4* needs to know your proxy settings. Go to the folder on your client machine where *Type to Learn 4* was installed (C:\Program Files\Sunburst\Type to Learn 4 is the default). There is another application there called "Type to Learn 4 Proxy Settings.exe". Use this application to configure your *Type to Learn 4* proxy settings. Turn on/off using a proxy server with *Type to Learn 4*, specify the address and port of your proxy, and if your proxy server requires a username and password those can be set here.

The Proxy Settings application saves your information in a file called "ProxySettings.ini" in the same folder. As a shortcut, copy this file to every client machine that needs to run *Type to Learn 4*, replacing the original ProxySettings file. Be sure to place it in the same folder as the *Type to Learn 4* application: (C:\Program Files\Sunburst\Type to Learn 4) on every machine.

Windows Client-Server Connectivity Setup

(Network Version only)

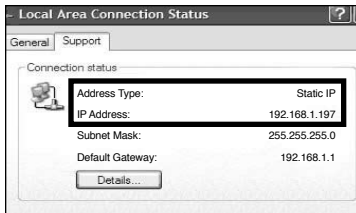
In order for the client machines to connect to the *Type to Learn 4* server on the local-area network, they need to know its IP Address. Simply modify one preference file on each client machine to point to that server.

1. Locate Your Server's IP Address

On your server machine, click Start Menu and select Network Connections. Network Connections may also be located inside the Control Panel.



Double-click the Local Area Connection which says it is "Connected". Then select the Support tab in the window that opens. The IP address of the machine is displayed:



2. Static IP

It should also say, "Address Type: Static IP", not "Assigned by DHCP" as in the image. A static IP address is important so it does not change over time, which would cause the client machines to lose connectivity to the *Type to Learn 4* server.

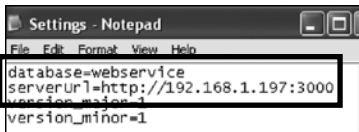
3. Firewall Note

Be sure that your server's firewall software is configured to allow access on port 3000 (decimal). If it is not open, the *Type to Learn 4* application will fail to detect the presence of the server.

4. Client Machine Settings

Edit the "Settings.ini" file on each client machine, located in the same folder as the *Type to Learn 4* client executable you installed (C:/Program Files/Sunburst/Type to Learn 4 is the default).

Open the Settings.ini file:



```
database=webservice
serverUrl=http://192.168.1.197:3000
version_major=1
version_minor=1
```

One line in this file needs to be edited to contain the IP address of your server machine. Change the line “serverUrl=” to equal your server machine’s IP address in the form <http://your.server.IP.address:3000>. It is important that the port number be 3000. It is also important that no extra slashes or dots be added to this line anywhere. Save the file.

Copy this Settings.ini file to each client machine that needs to run *Type to Learn 4* Network, overwriting the existing Settings.ini file in the C:/Program Files/Sunburst/Type to Learn 4 folder. The client machines will then be able to see your server.

As a test of client-server connectivity, launch the web browser on any of the client machines and enter the serverUrl you copied into the Settings.ini file (<http://your.server.IP.address:3000>). The *Type to Learn 4*

Welcome page should display. This is not how you access the application; it is only to test client-server connectivity.

Permissions

The installer will ensure that all users have both read and write permissions to the *Type to Learn 4* directories. This is very important. If you alter user permissions *Type to Learn 4* may not work properly. Programs like **Deep Freeze** and **Parental Control** which restrict user access may cause problems.

For **Standalone customers** only, it is critical that all student users have read and write permissions to the *Type to Learn 4* database on the client machine, which resides in this location:

- Windows XP: C:\Documents and Settings\All Users\Application Data\Sunburst\Type to Learn 4\development.sqlite3
- Windows Vista: C:\ProgramData\Sunburst\Type to Learn 4\development.sqlite3

(The Application Data and ProgramData folders are hidden folders.)

NetSupport (Remote) Application

Type to Learn 4 is a DirectX application. If you are using NetSupport (Remote) Application on your Windows workstations, please be aware of the following note from the NetSupport Technical Library (<http://www.netsupport-inc.com/support/td.asp?td=268&Site=NSI&Lang>):

“Some Programs that utilize OpenGL and DirectX have been reported to no longer function correctly after the installation of NetSupport. In order to fix the DirectX issues, you will need to use NetSupport Manager 7.01 or later and tick the “Enable DVD Support” in the Client Configurator.”

Launching the Program

Double-click the *Type to Learn 4* icon on your desktop. You can also go to Start > Programs > *Type to Learn 4*.

Standalone and Network Users: If you have purchased a Standalone or Network version of *Type to Learn 4*, you must first login as a default administrator using the username: **admin** and the password: **welcome**.

Web Version Users: If you purchased a Web version of *Type to Learn 4*, then your master account “superuser” username and password were emailed or shipped directly to you. Web Version users must also enter a valid Account Code, sent to you along with your username and password. This Account Code only needs to be entered once on each client machine, and after that it is remembered by the program.

Macintosh Server Installation (Network Version only)

This server installation places all of the server components for the Network Version of *Type to Learn 4* onto your school’s server. This automated process must be performed on the server itself, may take several minutes, and **will require a restart of your server**.

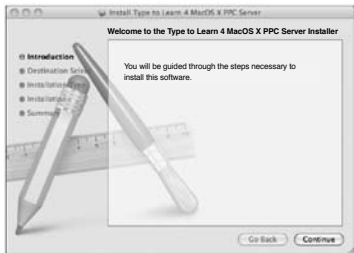
Note: You must have **Administrator rights** on the machine in order to run this server installer.

1. Place the *Type to Learn 4* Network CD Disk 1 of 2 into the CD-ROM drive of **your server**.

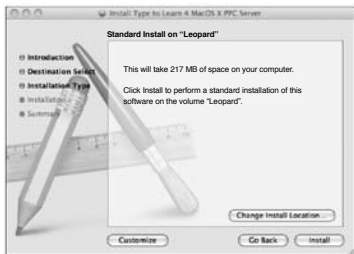
Note: There are two versions of the Mac server installer: one for Intel (X86) and one for PowerPC (PPC) Macintosh. **Be sure to select the correct one.** The installers themselves do not check to ensure that you are running on a supported machine. You can use the “About this Mac” function in the Apple menu to determine which type of Macintosh you are using.



2. Double-click to launch the appropriate installer.



3. Click Continue on the Introduction screen.



4. To accept the default install location, click Install. To select a different install location, click Change Install Location. System administrators may also want to Customize the installation components, but we highly recommend performing the default Standard Installation.

5. Click Continue until the installation is complete.

6. You must **restart your server** after you have completed the installation.

Macintosh Client Installation

(All Versions) Every *Type to Learn 4* purchaser must do this Client Installation.

Note: You must have **Administrator rights** on the machine in order to run this installer.

This client installation places the *Type to Learn 4* application onto your computer. The installation should be performed on every client machine that needs to run *Type to Learn 4*, including Web version computers. Installation may take about 10-20 minutes and may require a restart of the computer.

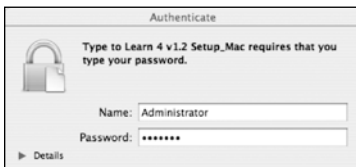
Important: Do not simply copy the *Type to Learn 4* files from one computer to another. This will cause permissions problems and the program may not run. Make sure to use the installer to install the product onto each client machine.

Before installing *Type to Learn 4* we recommend that you close all open applications on your computer.

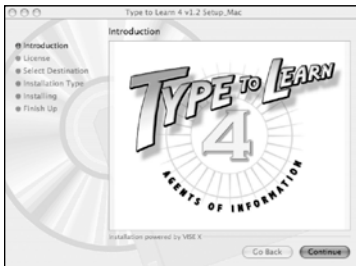
1. Place the *Type to Learn 4* CD Disk 1 of 2 into the CD-ROM drive of your client machine and launch the CD-ROM.



2. Launch the "Type to Learn 4 v1.2 Setup_Mac" installer.



3. You may be asked by your operating system to enter your administrator password. Do so.



- (10) 4. Click Continue on the Introduction screen.



5. Read the End User License Agreement and click Continue if you agree to the terms.



7. Accept the default location of the Applications folder (which we recommend) or Select a different folder in which to install *Type to Learn 4*. Click Continue.



6. Click Agree if you agree to the software license terms.



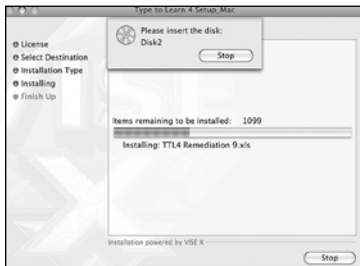
8. Accept the Easy Install default selection and click Install to begin the installation.



The installation proceeds.



10. Click Quit when installation is complete.



9. When the installer asks for Disk 2, remove Disk 1 from your CD-ROM drive and input the *Type to Learn 4* Disk 2 of 2 into the same drive. The installer will automatically continue.

Important! Proxy Servers: If you use a proxy server to connect to the internet, Type to Learn 4 needs to know your proxy settings. Go to the folder on your client machine where Type to Learn 4 was installed (Applications\Sunburst\ Type to Learn 4 is the default). There is another application called "Type to Learn 4 Proxy Settings". Use this application to configure your Type to Learn 4 proxy settings. Turn on/off using a proxy server with Type to Learn 4, specify the address and port of your proxy, and if your proxy server requires a username and password those can be set here.

The Proxy Settings application saves your information in a file called "ProxySettings.ini" in the same folder. As a shortcut, copy this file to every client machine that needs to run Type to Learn 4, replacing the original ProxySettings file. Be sure to place it in the same folder as the Type to Learn 4 application: (Applications\Sunburst\ Type to Learn 4) on every machine.

Mac Client-Server Connectivity Setup

(Network Version only)

In order for the client machines to connect to the *Type to Learn 4* server on the local-area network, they need to know its IP Address. Simply modify one preference file on each client machine to point to that server.

1. Locate Your Server's IP Address

On your server machine, go into System Preferences in the dock at the bottom of the screen, or select System Preferences from the Apple Menu at the top left.



Click the Network icon.



Your screen may look different, depending on which version of MacOS X you are running. Select Built-in Ethernet connection. Make sure it says you are Connected. The server machine's IP address displays.

2. Static IP

It should also say, "Configure: Static IP Address", not "Using DHCP". A static IP address is important so it does not change over time, which would cause the client machines to lose connectivity to the *Type to Learn 4* server.

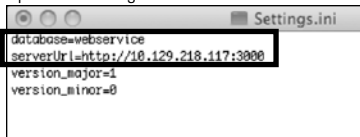
3. Firewall Note

If you have installed anti-virus software on the machine, be sure that your server's firewall software is configured to allow access on port 3000 (decimal). If it is not open, the *Type to Learn 4* application will fail to detect the presence of the server.

4. **Client Machine Settings**

Edit the Settings.ini file on each client machine, located in the same folder as the *Type to Learn 4* client executable you installed (Applications\Sunburst\Type to Learn 4 is the default).

Open the Settings.ini file:



Change the line “serverUrl=” to equal your server machine’s IP address in the form of http://your.server.IP.address:3000. It is important that the port number be 3000. It is also important that no extra slashes or dots be added to this line anywhere. Save the file.

Copy this Settings.ini file to each client machine, overwriting the existing Settings.ini file in the Applications\Sunburst\Type to Learn 4 folder. The client machines will then be able to see your server.

As a test of client-server connectivity, launch a web browser on any of the client machines and enter the serverUrl you copied into the Settings.ini file (http://your.

server.IP.address:3000). The *Type to Learn 4* Welcome page should display. This is not how you access the application; it is only to test client-server connectivity.

Permissions

The installer will ensure that all users have both read and write permissions to the *Type to Learn 4* directories. This is very important. If you alter user permissions Type to Learn 4 may not work properly. Programs like **Deep Freeze** and **Parental Control** which restrict user access may cause problems.

For **Standalone customers** only, it is important that all student users have read and write permissions to the *Type to Learn 4* database on the client machine, which resides in this location:

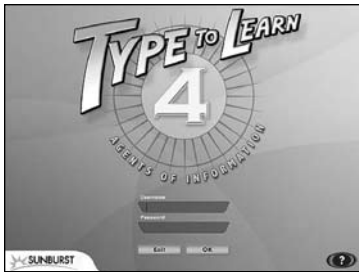
- Library\Applications\Sunburst\Type to Learn 4\development.sqlite3

Launching the Program

Double-click the *Type to Learn 4* icon on the desktop of your client machine. Type to Learn 4 can also be found inside the Applications\Sunburst\Type to Learn 4 program folder that was installed.

Logging In (all users)

When you launch *Type to Learn 4* you will first see this login screen:



All students, teachers, and administrators login here. Enter your username and password. Click the question mark button for Help.

Standalone and Network Users:

If you have purchased a Standalone or Network version of *Type to Learn 4*, you must first login as an administrator using the username: **admin** and the password: **welcome**.

Web Version Users: If you purchased a Web version of *Type to Learn 4*, then your master account “superuser” username and password were emailed or shipped directly to you.

Web Version users must also enter a valid Account Code, sent to you along with your username and password. This Account Code only needs to be entered once on each client machine, and after that it is remembered by the program.

Lost Password

If a student forgets his/her password, any teacher can reset it in the Edit Student area of Teacher Management. If a teacher forgets his/her password, an administrator can reset it in the Edit Teacher area of Teacher Management. A lost password for the administrator or superuser requires contacting Sunburst Technical Support:

(800) 338-3457

support@sunburst.com

<http://techsupport.sunburst.com/>



Published by

SUNBURST digital

X9500050